



National Land
INDUSTRIAL • COMMERCIAL
DEVELOPERS

1,350,000+ SF



Atlantic Avenue, Mays Landing, NJ
Hamilton Business Park



AVAILABLE FOR SALE

99 ACRES OF LAND

NATIONAL LAND DEVELOPERS

609 East Baltimore Pike

Media, PA 19063

NationalLandDevelopers.com

Built-to-suit Industrial Lots

Custom purchase options for one or more buildings

PROPERTY HIGHLIGHTS



Zoning: (IBP) Industrial Business Park



Highways:

Route 40; Route 50

AC Expressway

5 Miles from AC Airport



Proposed Yield: 1,350,000 S.F.

(smaller lots & building sizes available)



Docks: 100 13' Truck Docks

Trailer Parking: 117 (11')

Car Parking: 385 (9')



Utilities:

Municipal Water & Sewer;

Gas & Electric

JOSEPH MARLEY

President

Office: 610.565.6566

Direct: 610.655.5588

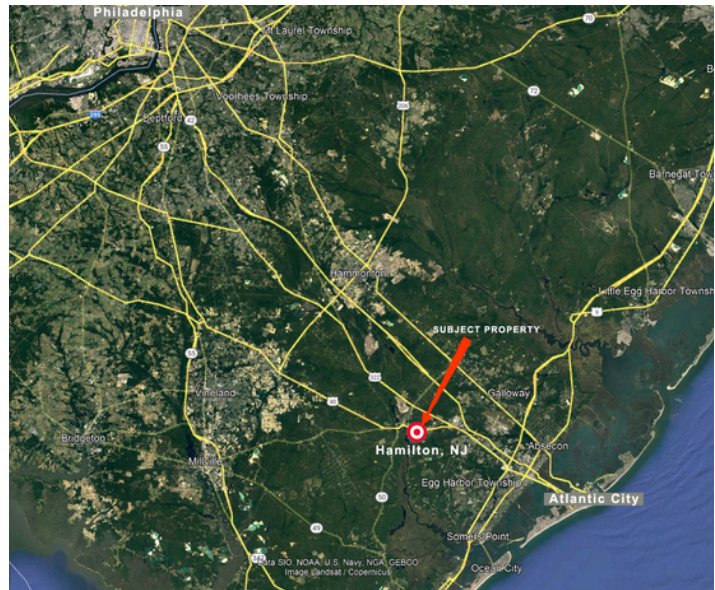
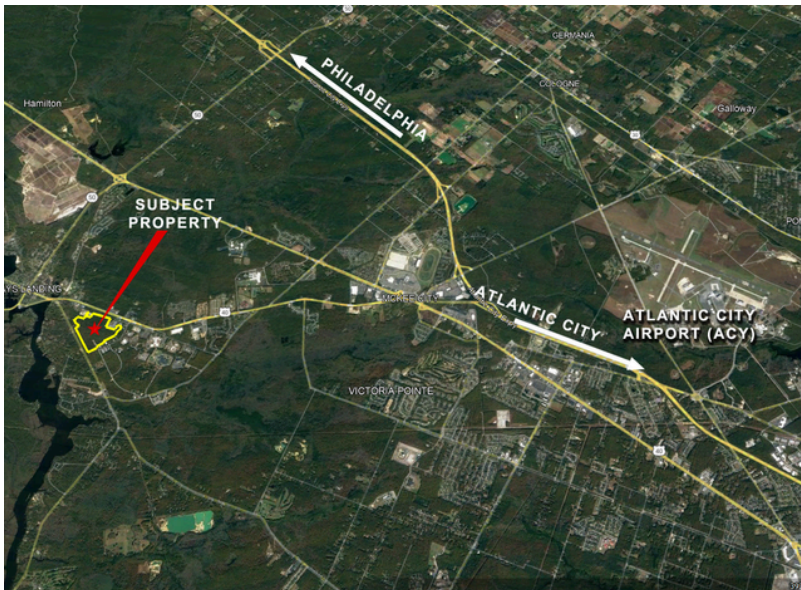
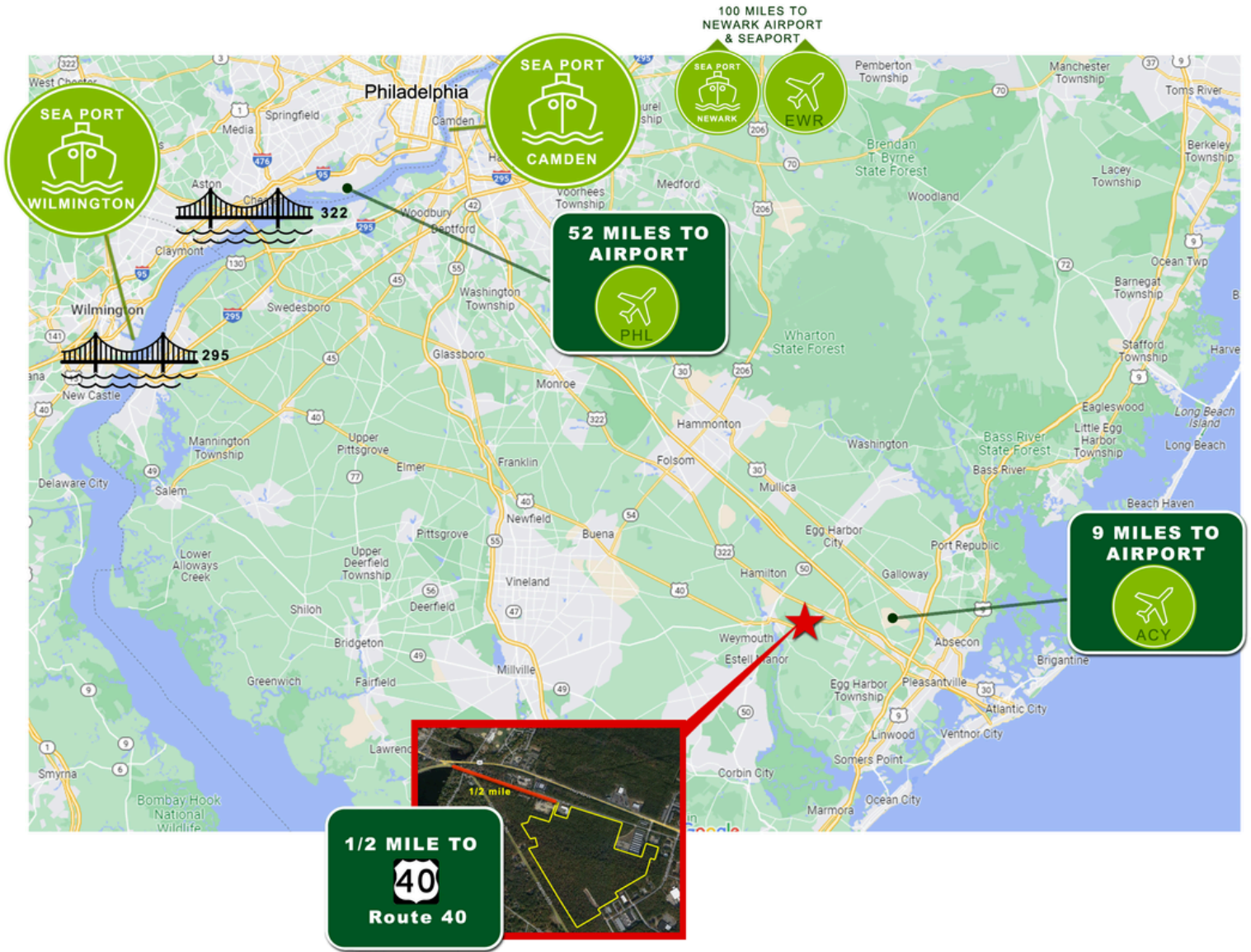
Email: JMarley@NationalLD.com



National Land

INDUSTRIAL • COMMERCIAL
DEVELOPERS

IDEAL LOCATION





DEMOGRAPHICS	1 HOUR	2 HOURS	3 HOURS
TOTAL POPULATION	2,589,433	12,349,093	36,398,916
25 TO 44 YEARS OLD	1,569,193	8,191,693	11,556,014
TOTAL HOUSEHOLDS	2,253,571	11,455,279	16,134,092

SEA PORTS	MILES
PHILAPORT	53
CAMDEN, NJ (BALZANO) PORT	46
OF WILMINGTON, DE	71
PORT OF NEWARK, NJ	121
PORT OF BALTIMORE, MD	141

INT'L AIRPORTS	MILES
ATLANTIC CITY (ACY)	9
PHILADELPHIA (PHL)	53
WILMINGTON (ILG)	72
NEWARK (EWR)	116
JOHN F. KENNEDY (JFK)	140
BALTIMORE (BWI)	147

MAJOR CITIES	MILES
ATLANTIC CITY, NJ	18
PHILADELPHIA, PA	50
WILMINGTON, DE	70
TRENTON, NJ	79
ALLENTOWN, PA	113
NEW YORK, NY	128
BALTIMORE, MD	137
HARRISBURG, PA	156



National Land DEVELOPERS

INDUSTRIAL • COMMERCIAL

Visit our website to submit a request to join our preferred pre-market first look list.

www.NationalLandDevelopers.com

67 ac Howe Twp PA
800,000+ SF Industrial

42 ac Middletown DE
600,000+ SF Industrial
FULLY APPROVED

39+ ac Scranton PA Area
350,000+ SF Industrial

In Negotiations

11+ ac Cleona, PA
150,000+ SF Industrial

34 ac Hellam PA
300,000+ SF Industrial

96 ac Andover NJ
750,000+ SF Industrial

UNDER CONTACT

74 ac Kidder Twp PA
461,400+ SF Industrial

In Negotiations

74 ac Lenhartsville PA
300,000+ SF Industrial

100+ ac Carneys Point NJ
510,780 SF Industrial

99 ac Mays Landing, NJ
1,300,000+ SF Industrial

73+ ac Andover NJ
500,000+ SF Industrial

In Negotiations

38+ ac Mantua NJ
401,500+ SF Industrial

20+ ac Hilltown PA
217,000 SF Industrial

37+ ac Greenwich NJ
200,000 SF Industrial

10.5+ ac Deptford NJ
150,000 SF Industrial

18 + ac Central Bucks, PA
232,000+ SF Industrial

Coming Soon
Access to I-476

CALL NLD SALES: **(610) 565-6566**



National Land

INDUSTRIAL • COMMERCIAL
DEVELOPERS

ABOUT US

National Land Developers (NLD) is a privately owned commercial real estate development and investment company specializing in the industrial sector. Our core focus lies in acquiring raw land for development and build-to-suit projects, with the primary goal of maximizing each property's utility to enhance its overall value. At NLD, **we are committed to selling projects at any stage of entitlement.**

Our comprehensive range of services encompasses land acquisitions, conceptual site planning featuring custom building layouts, final engineered plans, site and construction services, as well as optional credit tenant financing as needed. Through strategic partnerships, we boast access to acquire over 75,000 acres across Pennsylvania, New Jersey, and Delaware, granting NLD the unparalleled capability to address diverse geographic and logistical requirements.

NLD presents an exclusive portfolio of assets tailored for industrial, cold storage, warehouse distribution, fleet and truck parking, and manufacturing purposes. For a closer look at our offerings, please visit our website at NationalLandDevelopers.com.

OUR PRIORITIES

- Locate strategically positioned premium parcels
- Maximize the value of land through entitlement
- Perform excellent due diligence to minimize capital risk
- Minimize time-to-market
- Match Industrial buyers to our inventory

CONTACT US

Joseph Marley, President
National Land Developers, LLC
Media, Pennsylvania

Direct: (610) 655-5588
Office: (610) 565-6566

E-Mail: jmarley@NationalLD.com

NationalLandDevelopers.com